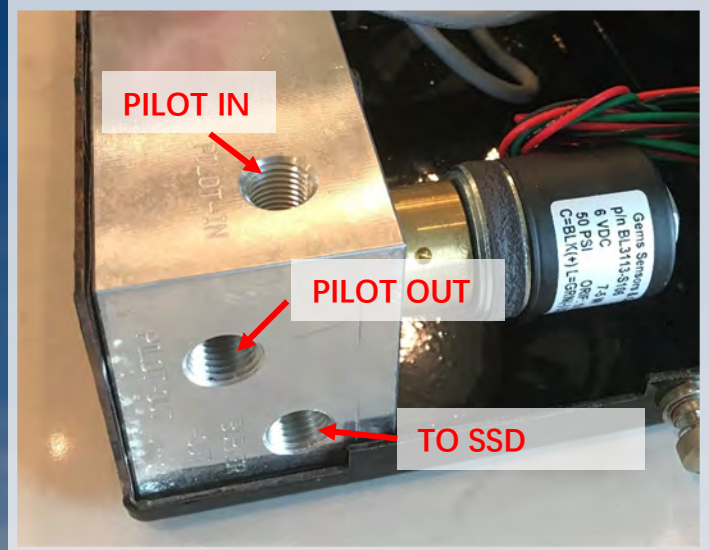
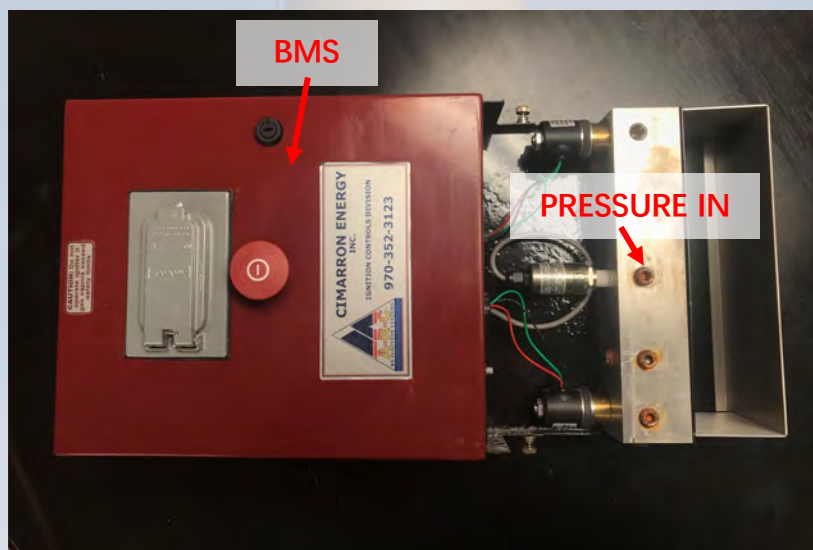


# FIRESALE - \$1250



UPGRADE **ANY FIRED EQUIPMENT** DEVICE  
WITH THIS **BMS + SAFETY SHUTDOWN COMBO**  
(Enclosed combustors, heater treaters, ...)



Due to internal design changes related to fired equipment controls, Cimarron has several dozen new BMS + Safety Shutdown (SSD) combos in inventory that have become obsolete.

#### Specifications:

- 1 ARC Burner Management System, first generation, obsolete.
- 2 latch valves (Gems Sensors & Controls, 3 way, 12VDC) that control the pilot gas inlet and the safety shutdown valve connected to the gas inlet (not included).
- 1 pressure transducer (Barksdale, 0-5 psig, 10VDC) that detects inlet gas pressure.
- An aluminum manifold that reduces the need for plumbing between these items.
- The whole kit is enclosed for weather protection.

This device just need connected to an inlet Shutdown (SSD) valve (not included). The Burner Management System will read the inlet pressure and control up the two latch valves. The inlet Shutdown valve should be gas operated.

#### How it works:

- When ready to start a fired equipment, the BMS will first open the pilot latch valve, let the fuel gas flow, allowing the pilot to be lit by the BMS.
- Once the pilot is on, with the safety shutdown valve closed by default, the BMS will detect if there is enough inlet gas pressure and open the inlet shutdown valve, allowing it to be lit by the pilot, and eliminating the risk of flash due to the presence of gas build up in the chamber section.

Contact Paul Gerber at 405-568-8049 – [PGerber@cimarron.com](mailto:PGerber@cimarron.com)